



ACCESS PANELS

Piano Hinge Style Fitting Instructions



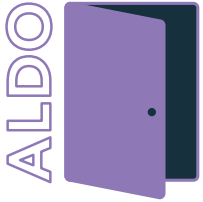
Thank you for choosing the ALDO Access Panel designed and manufactured in Great Britain. Please read this installation guide to help make the fitting process easier.



Scan the code to download instructions.

Important Fire Rating Notice

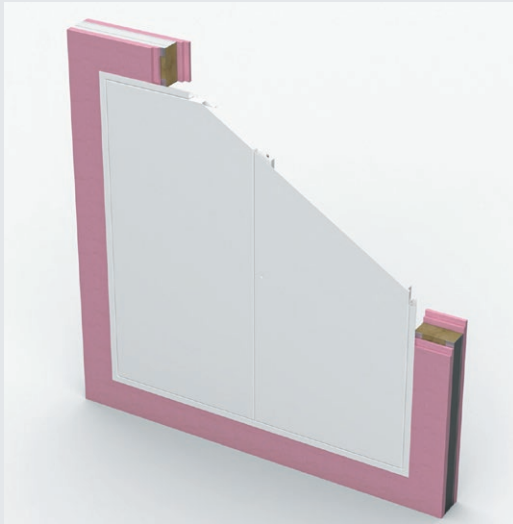
The ALDO Double Door Access Panel is a passive fire rated protection product that has successfully passed fire tests for over 2 hours. However, the fire rating of any Doorset is subject to a number of factors including the design of the Wall or ceiling, installation and fire stopping. Please ensure the Wall/ceiling meets the required fire performance criteria and the installation and fire stopping is carried out correctly. If there is any doubt please contact us.



ACCESS PANELS

FITTING INSTRUCTIONS

Piano Hinge Style Access Panels



Please see our recommendations below before installation.

Check the Door

Before opening the packaging please check for damage. The ALDO Double Access Panel Door is protected with oversized polystyrene corners and heat shrink wrapped in heavy duty polythene. Please recycle all the packaging. There will be printed labels with Number/Type/Position/Floor and Size at the Door ends, edges and the back of the Door. Please ensure the information corresponds with the installation position.

Check the Wall

The Wall/ceiling will need to be constructed to meet the required fire performance. Exposed timber lining studs will need to be protected with plasterboard. Steel lining studs can be left exposed. Internal Frame fixing positions will be 25mm & 40mm from the face of the Wall/ceiling surface. For the Beaded Frame type the Doorset should also be face fixed through the Beaded Flange.

REQUIRED TOOLS Before you proceed with installation, you will require these tools:



Spirit Level



Screwdriver



Metal Packers



Intumescent Sealer



Cordless Drill



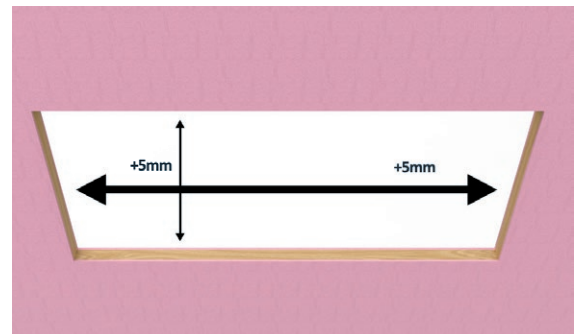
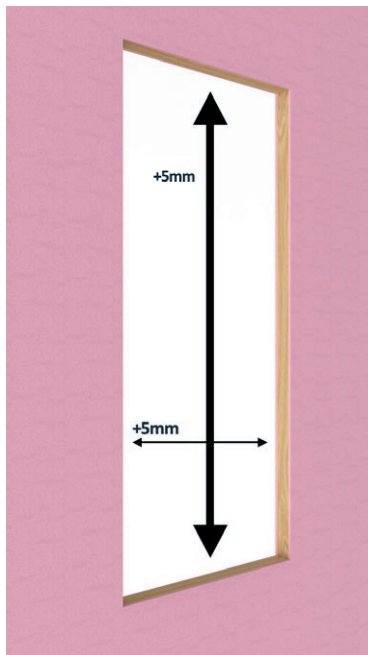
Stanley Knife



Tape Measure



10mm Spanner



1. CONSTRUCT THE OPENING

Carefully prepare the opening in the Wall/ceiling 10mm larger than the Doorset ordered to allow for fitting adjustment. The opening must be square, plumb and level.



ACCESS PANELS

FITTING INSTRUCTIONS

Piano Hinge Style Access Panels



2. UNPACK THE DOORS

Each pack should include a Door, half a Frame and a Frame joining plate. Joining plate screws will be fitted in the joining plate or bagged separately. A key will be taped to the back of the Door.



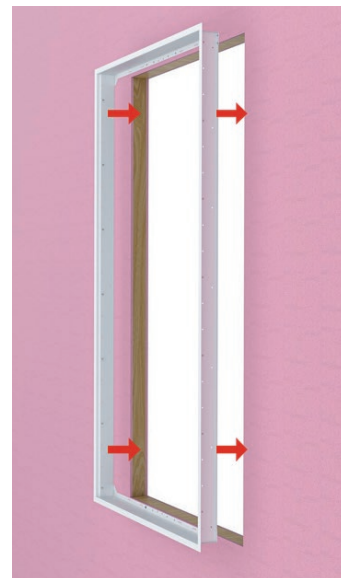
3. TAKE THE DOORS OUT OF THE FRAME

Use the 10mm spanner



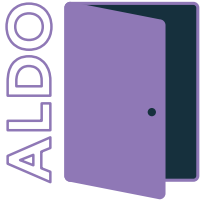
4. ASSEMBLE THE FRAME

On a flat surface use the joining plates to connect the two Frame halves.



5. PLACE THE FRAME IN THE OPENING

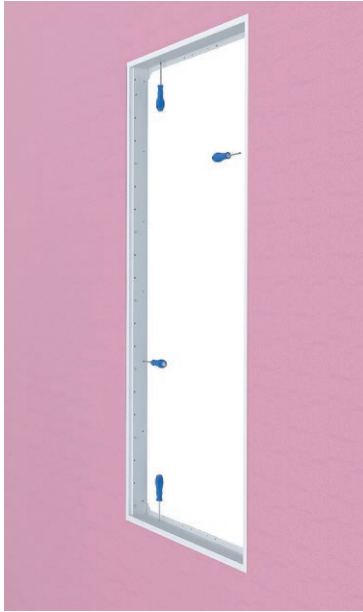
Place two screws in the closing side.



ACCESS PANELS

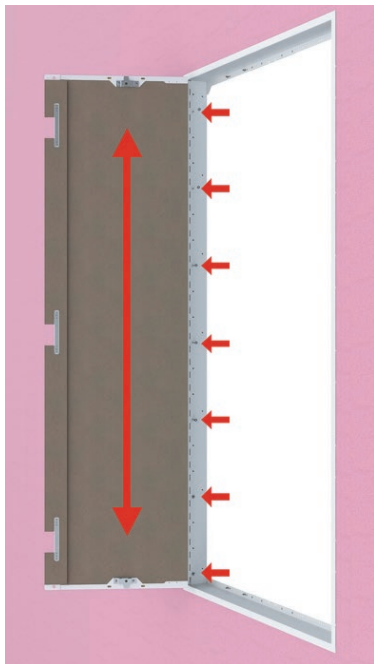
FITTING INSTRUCTIONS

Piano Hinge Style Access Panels



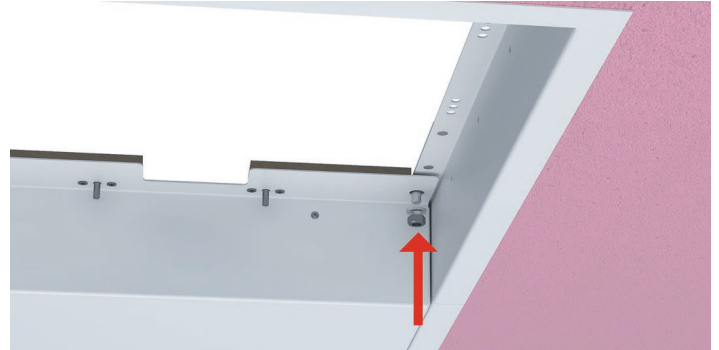
6. SCREW THE FRAME INTO POSITION

Using screws on each side, plumb and level the Frame. The joining plates can be relaxed to allow some adjustment. Use minimum 60mm x 5mm drywall fixings or longer to suit your wall/ceiling construction.



7. PLACE THE DOORS INTO THE FRAME

Hanging the Doors is a two man operation. Splay the piano hinge open and hook the Door onto the studs. Replace the washers and nuts. Align the Door up and down/left to right ensuring equal side gaps. Then tighten the nuts.

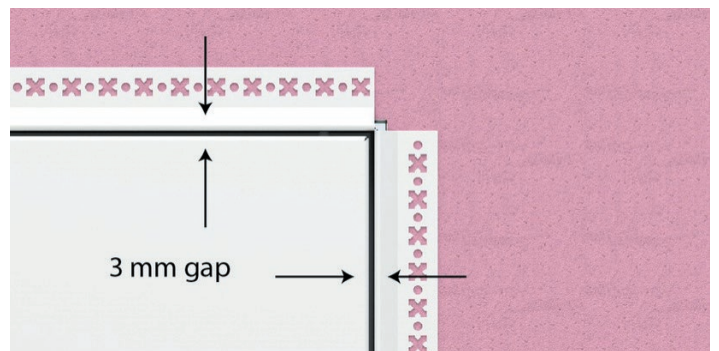


8. CLOSING THE DOORS

Ceilings: Close the passive Door first. The passive Door is aligned on a threaded stud holding the Door at the correct height. Wind the nut up until the Door face is level with the Frame. Close the active Door supporting its weight until the locks are engaged. Ensure both locks are engaged before releasing the weight.

Walls: The process is the same but the passive Door is held shut by a budget lock.

The top and bottom Door/Frame gaps should be the same as the hinge and centre gaps. Move the hinge edges vertically up or down to adjust the top and bottom gaps. Plastic caps installed into the bottom and head of the Door will maintain a consistent gap after adjustment. If the gap at the hinge edge is tight specialist packers can be applied to open and equal the gaps.



9. ADJUST

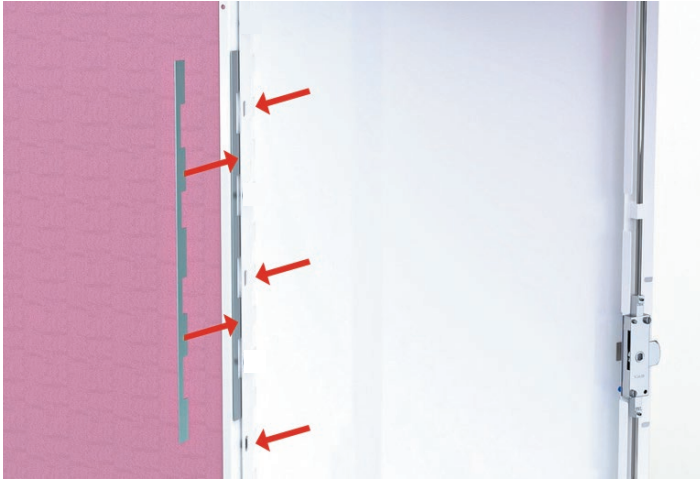
The top and bottom Door/Frame gaps should be the same as the hinge and centre gaps. Move the hinge edges vertically up or down to adjust the top and bottom gaps. Plastic caps installed into the bottom and head of the Door will maintain a consistent gap after adjustment. If the gap at the hinge edge is tight specialist packers can be applied to open and equal the gaps.



ACCESS PANELS

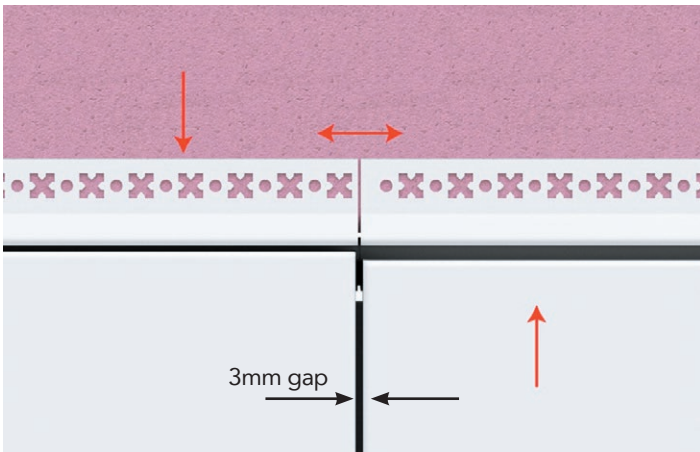
FITTING INSTRUCTIONS

Piano Hinge Style Access Panels



9a. SHIM DETAIL & FIXING

Fit the shims between the hinge and the Door Frame to increase the Frame- to-Door gap at the hinge edge and to close the gaps between the Doors in the middle. Use the empty holes in the hinge to fix the Frame into the aperture.



10. CHECK DOOR ALIGNMENT

Each Door should be level with its pair. Joining plates can be slightly separated to open the gap between the Doors. The picture shows the result of the Frame fitted out of square. Correct the Door by adjusting the Frame position.



11. CHECK THE OPENING & CLOSING

The Doors should now open and close without rubbing on the Frame. Adjust where required.

BEADED FRAME



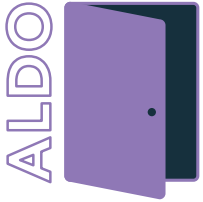
12. COMPLETE THE FACE FIXINGS

Do not lock the door before checking the operation. With the door in the open position operate the lock several times. The lock should operate smoothly without sticking. Use the adjusters to move the locking rods forwards or backwards to align the door into the frame. If the wall is not perfectly plumb the rods will slightly correct for any inconsistency.

Face fixing recommended 50mm from bead corner, 150mm centres, max 250mm. Min screws recommended M5 x 60mm.

For Picture Frame

Skip this step for Picture Frame installation. Go to Point 16



ACCESS PANELS

FITTING INSTRUCTIONS

Piano Hinge Style Access Panels



13. TAPE & JOINT/ PLASTER

Use scrim cloth self-adhesive tape. Plaster or Tape and joint as required.



14. SKIM THE DOORS

Skim over the Beaded Frame with a First and Second Coat



15. FINISHING THE DOORS

Once the Door and Ceiling are Skimmed, clean out the Plaster from between the Door and the Frame before Emulsifying over the Ceiling and Door Face.

PICTURE FRAME



16. COMPLETE THE FITTING OF THE DOORS

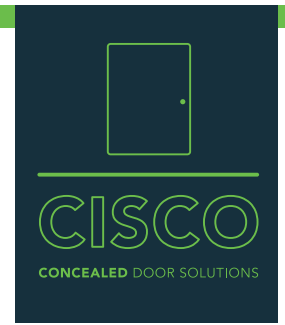
Once the Door is fitted into the Aperture ensure the Picture Frame sits Flush with the Wall or Ceiling Hold the Panel in place and use the Pre-Punched Fixing Holes on the Side of the Frame to secure.

MULTIPLE DOOR INSTALLATION

Multiple Doors arrive with each Door wrapped with its Frame parts and joining plates. Follow the instructions as the double Door installation. The Multiple Doors are more complex and more time should be allowed to achieve a good installation.

For technical advice, please call.

Fire Stopping Advice



Correct fire-stopping is critical to maintain the integrity of the installation. The following recommendations are for; site guidance to correctly seal the gap between wall and Riser Door assembly.

The Riser Door assembly is delivered complete with door hung into its frame pre-fitted with all ironmongery. Both single and double doors arrive with frames factory fitted, delivered either in one piece, or two parts. Intumescent seals and draught seals are factory fitted.

CISCO measure the Riser Door to the outside of the frame. Do not measure the flange that is fixed to the face of the wall. We recommend building the aperture 10mm larger than the product ordered. For example an 1800 x 600mm product would need an aperture 1810 x 610mm. The extra 5mm to each side allows for tolerance, square and plumb of the aperture and for the product to be fitted.

In a steel stud partition the Riser Door fits against the steel stud. Apertures in Timber Stud Partitions must be lined with one layer of fire-line board for 60 minutes, two layers for 120 minutes. No intumescent mastic is required to the wall face as the integral flange wraps around the aperture opening.

Shims or Packers - steel shims CISCO can provide these.

Calcium Silicate board - Supalux or equivalent tested product.

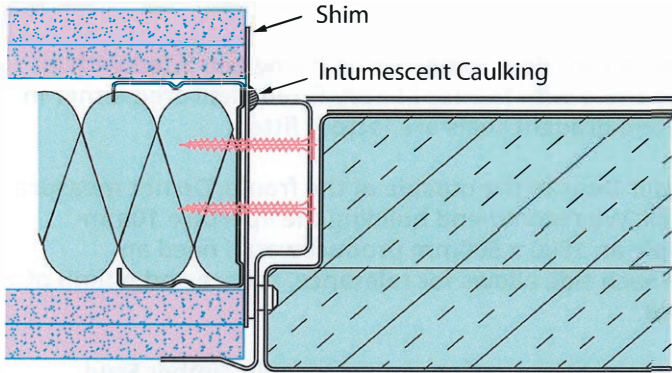
Fire-line board - any manufacturers version of a fire rated plasterboard is acceptable.

Rockwool - minimum 45kg/m² Rockwool or equivalent, fire-rated product may be used.

Intumescent caulking - any proprietary mastic complying with BS EN 467-20 or BS EN 1366-4 for use as a gap filling intumescent.

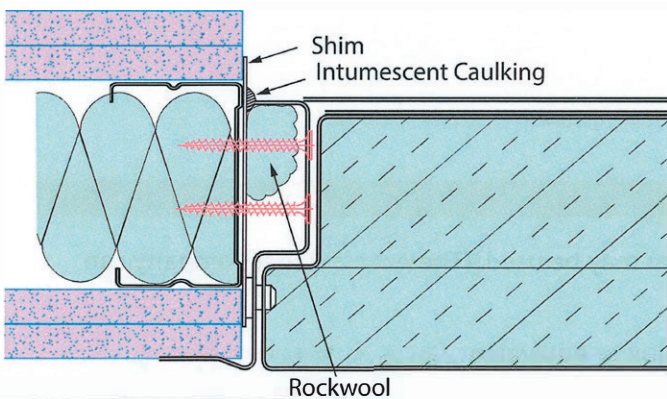
Fixing Screws - 60mm x 5mm for a 5mm gap. Use progressively.
Longer screws for larger gaps to ensure a solid fix into the wall.

Fire Stopping Advice



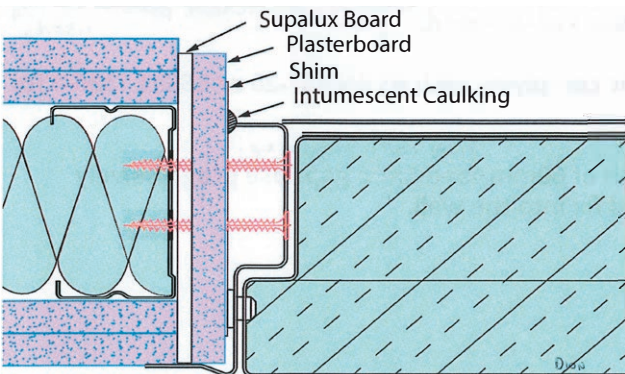
GAPS UNDER 5MM

We expect to cap or fill a gap of at least 5mm. Shim & screw fix the frame to achieve a plumb fit and run a bead of mastic into the gap between wall and frame. One screw in each pair of fixing holes may be used.



GAPS BETWEEN 5 & 10MM

Shim & fix as above, pack Rockwool into the gap and cap with a bead of intumescent mastic OR if possible line the aperture with 6mm Supalux and fire-stop the reduced gap as the 5mm instruction.

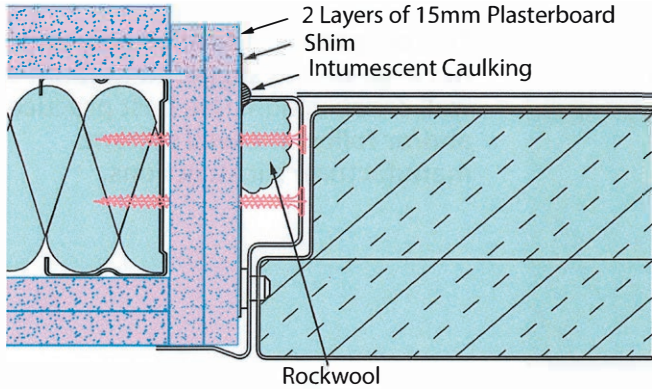


GAPS BETWEEN 10 & 20MM

Use Supalux or fire-line board to the edges of the aperture to reduce the gap.

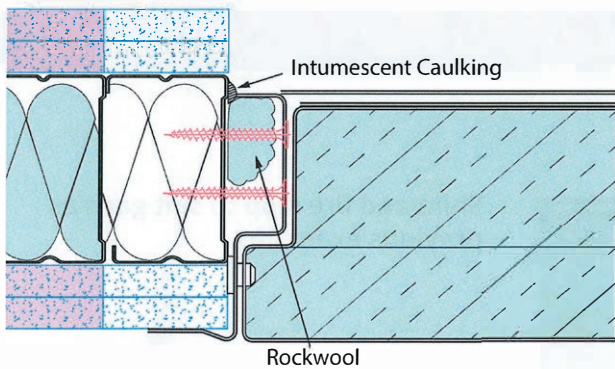
Then follow the previous instructions with longer fixing screws depending on the gap increase. The fixing screws must be screwed into the wall stud and not just into the surrounding packing pieces.

Fire Stopping Advice



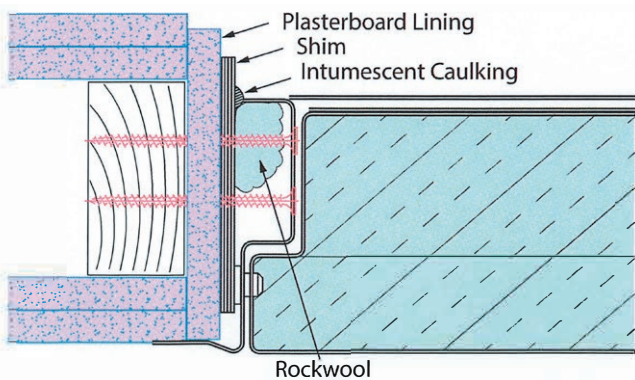
GAPS BETWEEN 20 & 30MM

As previous with two layers of 15mm fire-line plasterboard.



GAPS OVER 30MM

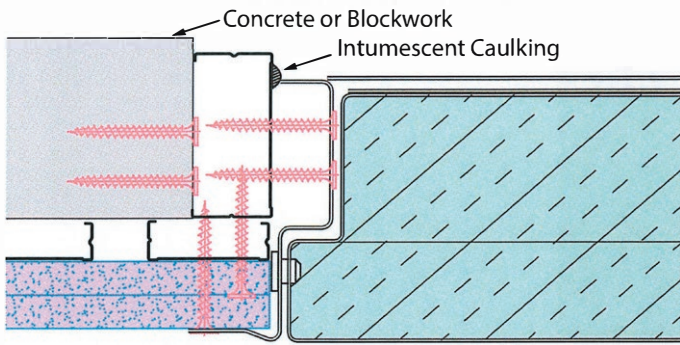
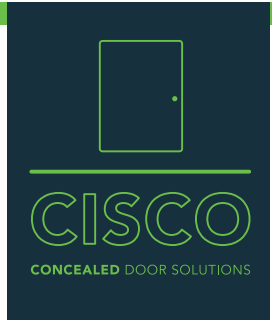
Fire-stopping Gaps over 30mm each side. At this size of gap, consideration should be given to installing further stud work to form an aperture that better fits the Riser Door ordered. When reducing an aperture, the construction should maintain the fire integrity of the wall.



EXAMPLE OF TIMBER STUD LINING

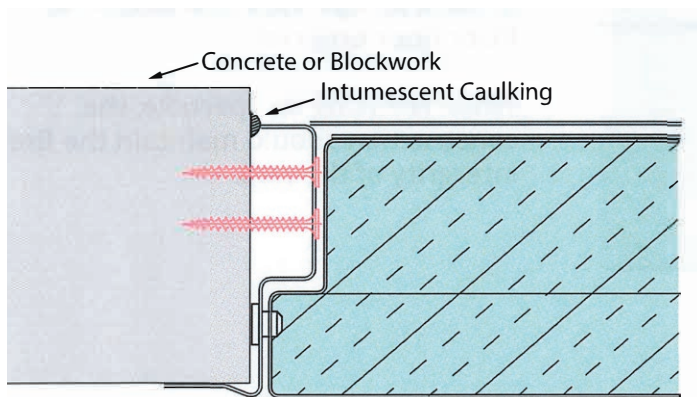
Timber stud partition must be lined with:
1 x layer of plasterboard for 60 mins
2 x layers of plasterboard for 120 mins

Fire Stopping Advice



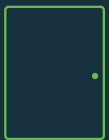
EXAMPLE OF REINFORCED CONCRETE INSTALLATION WITH DRY LINED FACE

This diagram is indicative only and not intended to suggest a method of wall construction. Use best practice and/or follow the wall systems manufacturer's instructions.



EXAMPLE OF FAIR FACED BLOCKWORK OR REINFORCED CONCRETE INSTALLATION

Shim and fire stop to suit gaps as previous examples.



CISCO

CONCEALED DOOR SOLUTIONS

01246 572288 | sales@ciscouk.co

CISCO | Foxwood Industrial Park | Foxwood Road | Chesterfield | S41 9RN

www.ciscouk.co

© 2023 by CISCO Concealed Integrated Door Solutions. All rights reserved

Where colour and finish samples are shown within this document limitations in the reprographics process mean absolute colour accuracy cannot be guaranteed. Where colour matching is critical, a sample of the material can be provided on request. CISCO Concealed Door Solutions reserves the right to alter specification.



ACCESS PANELS

Pivot Hinge Style Fitting Instructions



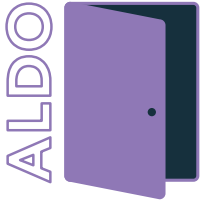
Thank you for choosing the ALDO Access Panel designed and manufactured in Great Britain. Please read this installation guide to help make the fitting process easier.



Scan the code to download instructions.

Important Fire Rating Notice

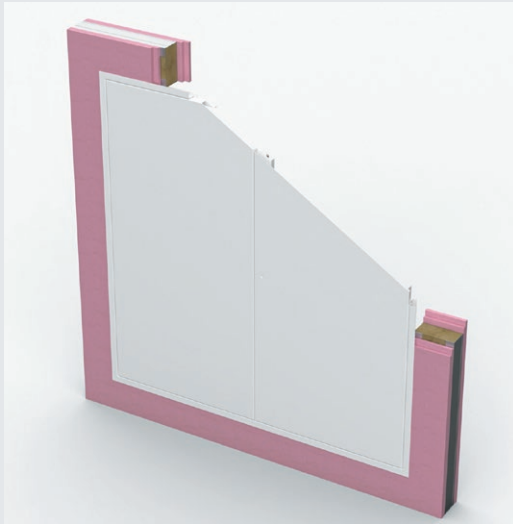
The ALDO Double Door Access Panel is a passive fire rated protection product that has successfully passed fire tests for over 2 hours. However, the fire rating of any Doorset is subject to a number of factors including the design of the Wall or ceiling, installation and fire stopping. Please ensure the Wall/ceiling meets the required fire performance criteria and the installation and fire stopping is carried out correctly. If there is any doubt please contact us.



ACCESS PANELS

FITTING INSTRUCTIONS

Pivot Hinge Style Access Panels



Please see our recommendations below before installation.

Check the Door

Before opening the packaging please check for damage. The ALDO Double Access Panel Door is protected with oversized polystyrene corners and heat shrink wrapped in heavy duty polythene. Please recycle all the packaging. There will be printed labels with Number/Type/Position/Floor and Size at the Door ends, edges and the back of the Door. Please ensure the information corresponds with the installation position.

Check the Wall

The Wall/ceiling will need to be constructed to meet the required fire performance. Exposed timber lining studs will need to be protected with plasterboard. Steel lining studs can be left exposed. Internal Frame fixing positions will be 25mm & 40mm from the face of the Wall/ceiling surface. For the Beaded Frame type the Doorset should also be face fixed through the Beaded Flange.

REQUIRED TOOLS Before you proceed with installation, you will require these tools:



Spirit Level



Screwdriver



Metal Packers



Intumescent Sealer



Cordless Drill



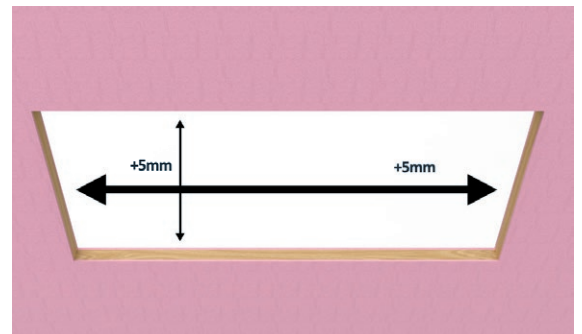
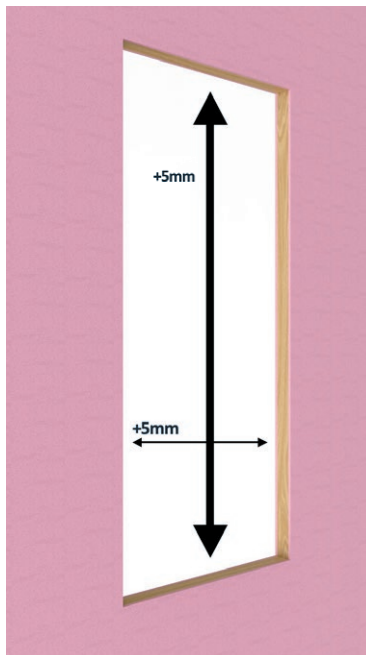
Stanley Knife



Tape Measure



10mm Spanner



1. CONSTRUCT THE OPENING

Carefully prepare the opening in the Wall/ceiling 5mm larger than the Doorset ordered (2.5mm on either side) to allow for fitting adjustment. The opening must be square, plumb and level.



ACCESS PANELS

FITTING INSTRUCTIONS

Pivot Hinge Style Access Panels



2. UNPACK THE DOORS

Each pack should include a Door, half a Frame and a Frame joining plate. Joining plate screws will be fitted in the joining plate or bagged separately. A key will be taped to the back of the Door.



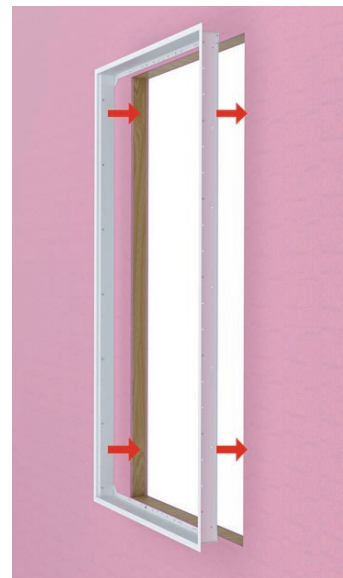
3. TAKE THE DOORS OUT OF THE FRAME

Use the Screwdriver to lift the door off the bottom pivot



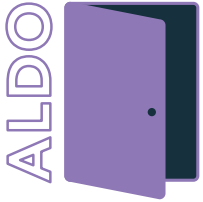
4. ASSEMBLE THE FRAME

On a flat surface use the joining plates to connect the two Frame halves.



5. PLACE THE FRAME TO THE OPENING

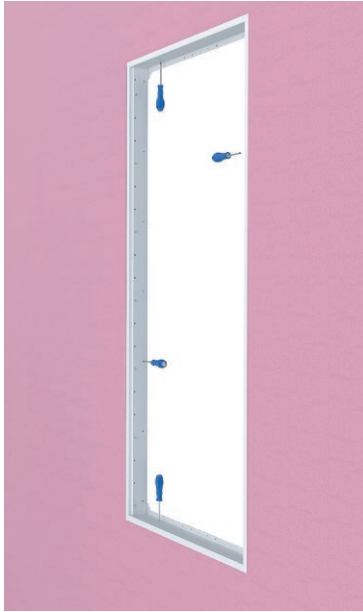
Place two screws in the closing side.



ACCESS PANELS

FITTING INSTRUCTIONS

Pivot Hinge Style Access Panels



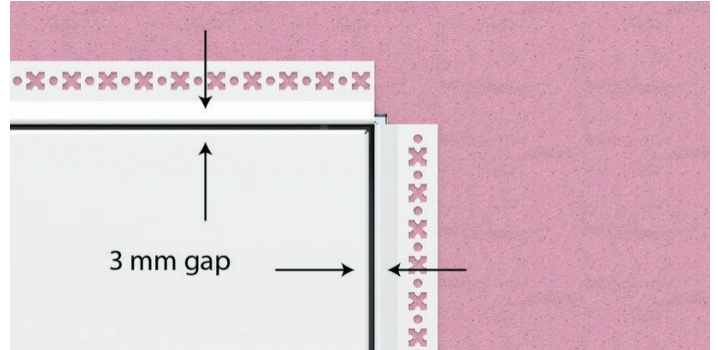
6. SCREW THE FRAME INTO POSITION

Using screws on each side, plumb and level the Frame. The joining plates can be relaxed to allow some adjustment. Use minimum 45mm x 5mm drywall fixings or longer to suit your Wall/ceiling construction.



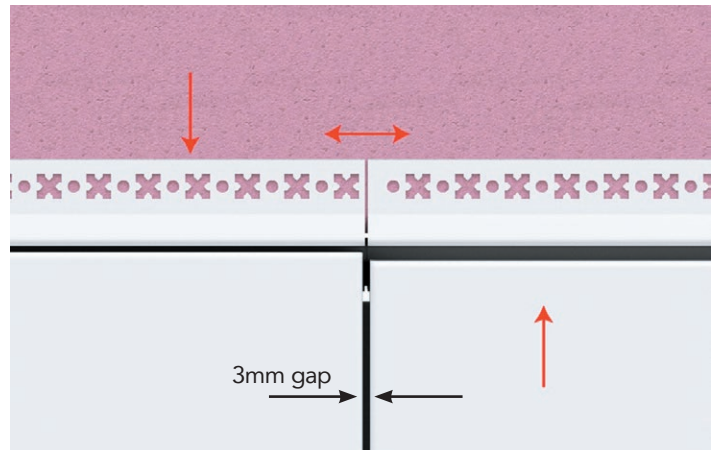
7. PLACE THE DOOR INTO THE FRAME

Hanging the door is a two man operation. A Riser Door can weigh 40kg+. Place the door leaf onto the bottom pivot point with the nylon spacer washer and lift the door into place. Hold the top spring pivot barrel down which will pop up when it locates into its hole. Visually check the pivot barrel has located correctly by checking the access hole in the side of the door.



8. ADJUST & SHIM

The top and bottom Door/Frame gaps should be the same as the hinge and centre gaps. Move the hinge edges vertically up or down to adjust the top and bottom gaps. Plastic caps installed into the bottom and head of the Door will maintain a consistent gap after adjustment.



9. CHECK DOOR ALIGNMENT

Each Door should be level with its pair. Joining plates can be slightly separated to open the gap between the Doors. The picture shows the result of the Frame fitted out of square. Correct the Door by adjusting the Frame position.



ACCESS PANELS

FITTING INSTRUCTIONS

Pivot Hinge Style Access Panels



10. CHECK THE OPENING & CLOSING

The Doors should now open and close without rubbing on the Frame. Adjust where required.

BEADED FRAME



11. COMPLETE THE FACE FIXINGS

Do not lock the door before checking the operation. With the door in the open position operate the lock several times. The lock should operate smoothly without sticking. Use the adjusters to move the locking rods forwards or backwards to align the door into the frame. If the wall is not perfectly plumb the rods will slightly correct for any inconsistency.

For Picture Frame

Skip the step above.

Face fixing recommended 50mm from bead corner, 150mm centres, max 250mm. Min screws recommended M5 x 60mm.



12. TAPE & JOINT/ PLASTER

Use scrim cloth self-adhesive tape. Plaster or Tape and joint as required.



13. SKIM THE DOORS

Skim over the Beaded Frame with a First and Second Coat



ACCESS PANELS

FITTING INSTRUCTIONS

Pivot Hinge Style Access Panels



15. FINISHING THE DOORS

Once the Door and Ceiling are Skimmed, clean out the Plaster from between the Door and the Frame before Emulsionsing over the Ceiling and Door Face.

PICTURE FRAME



16. COMPLETE THE FITTING OF THE DOORS

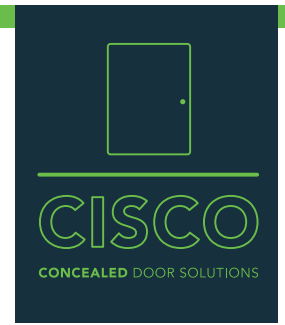
Once the Door is fitted into the Aperture ensure the Picture Frame sits Flush with the Wall or Ceiling Hold the Panel in place and use the Pre-Punched Fixing Holes on the Side of the Frame to secure.

MULTIPLE DOOR INSTALLATION

Multiple Doors arrive with each Door wrapped with its Frame parts and joining plates. Follow the instructions as the double Door installation. The Multiple Doors are more complex and more time should be allowed to achieve a good installation.

For technical advice, please call.

Fire Stopping Advice



Correct fire-stopping is critical to maintain the integrity of the installation. The following recommendations are for; site guidance to correctly seal the gap between wall and Riser Door assembly.

The Riser Door assembly is delivered complete with door hung into its frame pre-fitted with all ironmongery. Both single and double doors arrive with frames factory fitted, delivered either in one piece, or two parts. Intumescent seals and draught seals are factory fitted.

CISCO measure the Riser Door to the outside of the frame. Do not measure the flange that is fixed to the face of the wall. We recommend building the aperture 10mm larger than the product ordered. For example an 1800 x 600mm product would need an aperture 1810 x 610mm. The extra 5mm to each side allows for tolerance, square and plumb of the aperture and for the product to be fitted.

In a steel stud partition the Riser Door fits against the steel stud. Apertures in Timber Stud Partitions must be lined with one layer of fire-line board for 60 minutes, two layers for 120 minutes. No intumescent mastic is required to the wall face as the integral flange wraps around the aperture opening.

Shims or Packers - steel shims CISCO can provide these.

Calcium Silicate board - Supalux or equivalent tested product.

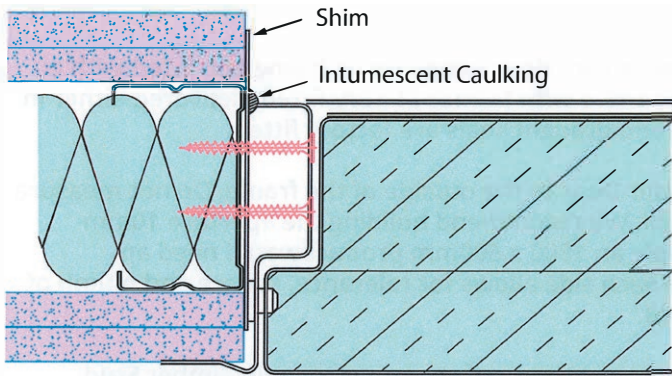
Fire-line board - any manufacturers version of a fire rated plasterboard is acceptable.

Rockwool - minimum 45kg/m² Rockwool or equivalent, fire-rated product may be used.

Intumescent caulking - any proprietary mastic complying with BS EN 467-20 or BS EN 1366-4 for use as a gap filling intumescent.

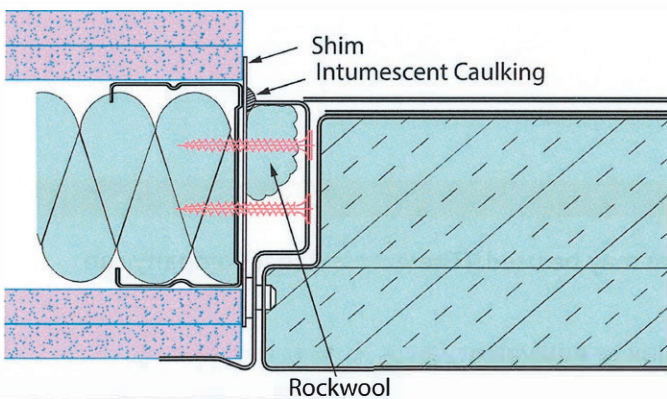
Fixing Screws - 60mm x 5mm for a 5mm gap. Use progressively.
Longer screws for larger gaps to ensure a solid fix into the wall.

Fire Stopping Advice



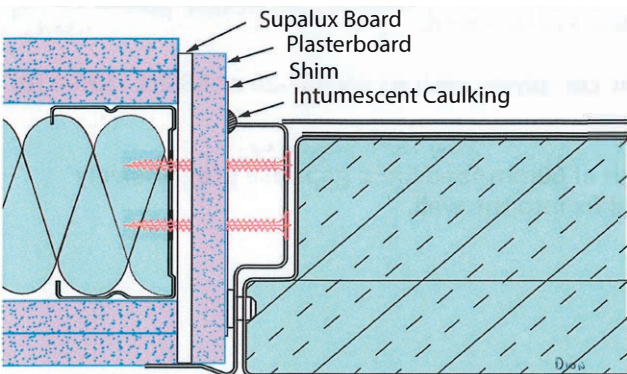
GAPS UNDER 5MM

We expect to cap or fill a gap of at least 5mm. Shim & screw fix the frame to achieve a plumb fit and run a bead of mastic into the gap between wall and frame. One screw in each pair of fixing holes may be used.



GAPS BETWEEN 5 & 10MM

Shim & fix as above, pack Rockwool into the gap and cap with a bead of intumescent mastic OR if possible line the aperture with 6mm Supalux and fire-stop the reduced gap as the 5mm instruction.

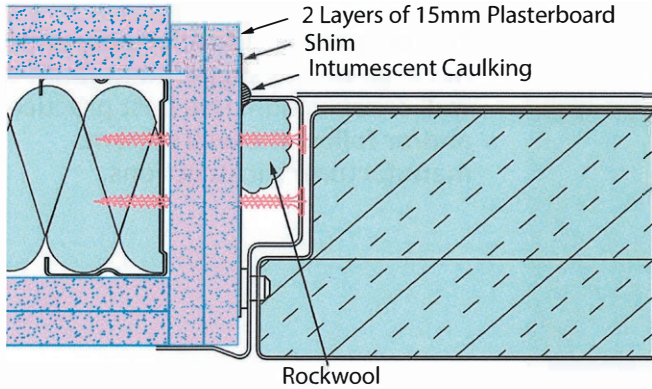


GAPS BETWEEN 10 & 20MM

Use Supalux or fire-line board to the edges of the aperture to reduce the gap.

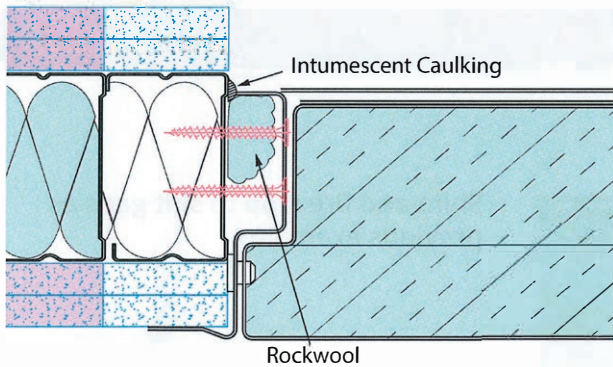
Then follow the previous instructions with longer fixing screws depending on the gap increase. The fixing screws must be screwed into the wall stud and not just into the surrounding packing pieces.

Fire Stopping Advice



GAPS BETWEEN 20 & 30MM

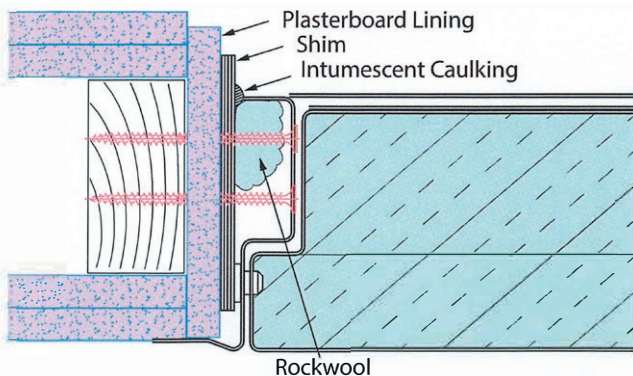
As previous with two layers of 15mm fire-line plasterboard.



GAPS OVER 30MM

Fire-stopping Gaps over 30mm each side. At this size of gap, consideration should be given to installing further stud work to form an aperture that better fits the Riser Door ordered.

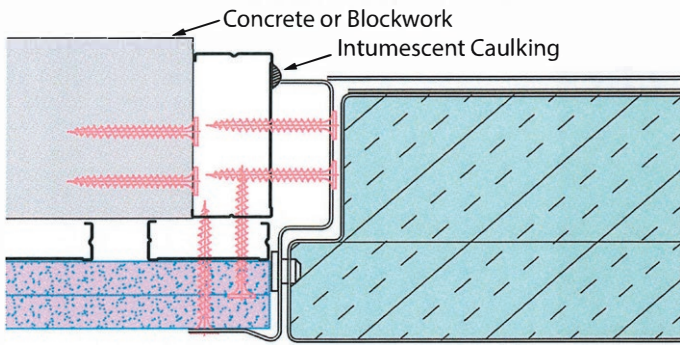
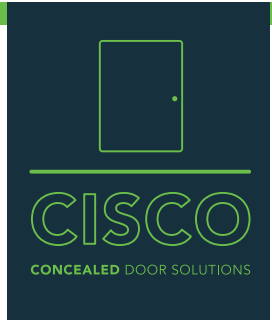
When reducing an aperture, the construction should maintain the fire integrity of the wall.



EXAMPLE OF TIMBER STUD LINING

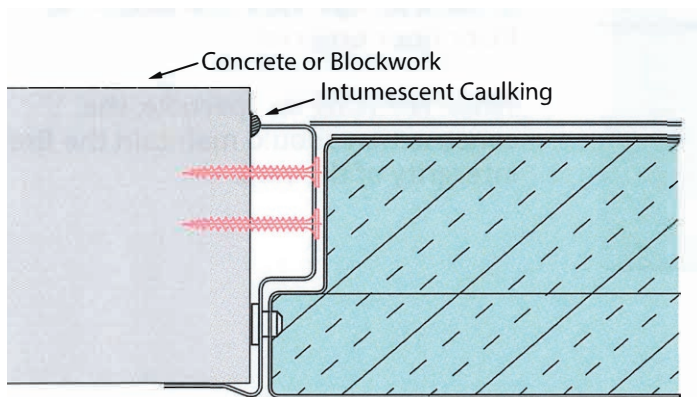
Timber stud partition must be lined with:
1 x layer of plasterboard for 60 mins
2 x layers of plasterboard for 120 mins

Fire Stopping Advice



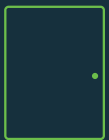
EXAMPLE OF REINFORCED CONCRETE INSTALLATION WITH DRY LINED FACE

This diagram is indicative only and not intended to suggest a method of wall construction. Use best practice and/or follow the wall systems manufacturer's instructions.



EXAMPLE OF FAIR FACED BLOCKWORK OR REINFORCED CONCRETE INSTALLATION

Shim and fire stop to suit gaps as previous examples.



CISCO

CONCEALED DOOR SOLUTIONS

01246 572288 | sales@ciscouk.co

CISCO | Foxwood Industrial Park | Foxwood Road | Chesterfield | S41 9RN

www.ciscouk.co

© 2023 by CISCO Concealed Integrated Door Solutions. All rights reserved

Where colour and finish samples are shown within this document limitations in the reprographics process mean absolute colour accuracy cannot be guaranteed. Where colour matching is critical, a sample of the material can be provided on request. CISCO Concealed Door Solutions reserves the right to alter specification.